



# V12

Features - Benefits

Major Release

January 2019

## RDS-WebAccess 12

### Summary:

The Version 12 release is a major step forward in the evolution of RDS-WebAccess, with greatly improved experience and feature sets for both Users and Administrators.

The most visible change is the new Interface. With a new look and streamlined access to your favorite features, the RDS-WebAccess Version 12 Interface was designed with three main objectives in mind.

- A **modern and user-friendly** dashboard:  
At once clean and functional, using modern design language to make management a breeze for administrators.
- An **easy and intuitive navigation**:  
Tabs are now displayed in a bar on the left side of the Administration Tool. The lexicon used is obvious and logical.
- A **simplified management**:  
Features have been reorganized to present settings in a more logical way, making it easier for Administrators to configure a server quickly and simplify regular management operations - the most used features are more visible, the most used settings are pre-selected.
  - EX: The Security Tab has been removed. Common security functions have been automated. Configuration operations have been nested into the appropriate tabs.

Keywords are: **Speed** ▪ **Security** ▪ **Simplicity**

This document is a guide to discovering RDS-WebAccess 12 with its new features and benefits.

**Floriane Mer**  
*Marketing Director*

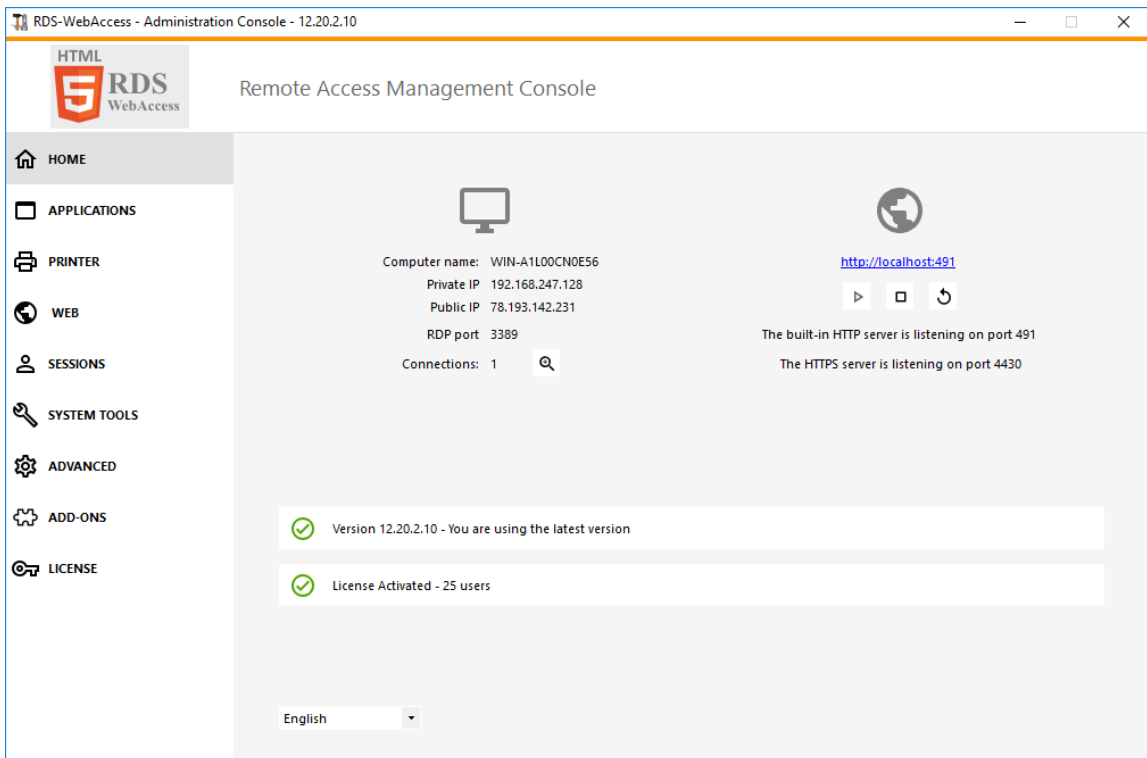
## The Home Dashboard

The new interface for RDS-WebAccess Version 12 is larger than its predecessor. There are now 10 menu tabs instead of 6. You will notice that the tabs for 'Server' and 'Security' have been removed. You will discover **6 new tabs**:

**Home** ▪ **Printer** ▪ **Sessions** ▪ **System Tools** ▪ **Advanced** ▪ **Add-ons**

### Key Improvements: Server's Overview

- Essential information about the Host/Client: IP, RDP port, etc..
- Status of the Remote Server and quick actions: Start/Stop/Restart.
- System audit: Reveals any issue with the server or the App.
- Essential information about the software: Edition, licensing, version.
- Language selection



The screenshot displays the RDS-WebAccess Administration Console interface. The title bar reads "RDS-WebAccess - Administration Console - 12.20.2.10". The main content area is titled "Remote Access Management Console". On the left, there is a navigation menu with the following items: HOME (selected), APPLICATIONS, PRINTER, WEB, SESSIONS, SYSTEM TOOLS, ADVANCED, ADD-ONS, and LICENSE. The main dashboard area shows a computer icon with the following details: Computer name: WIN-A1L00CNOE56, Private IP: 192.168.247.128, Public IP: 78.193.142.231, RDP port: 3389, and Connections: 1. To the right, there is a globe icon with the URL <http://localhost:491> and a play button icon. Below this, it states "The built-in HTTP server is listening on port 491" and "The HTTPS server is listening on port 4430". At the bottom of the dashboard, there are two status indicators: a green checkmark indicating "Version 12.20.2.10 - You are using the latest version" and another green checkmark indicating "License Activated - 25 users". A language dropdown menu is visible at the bottom left, currently set to "English".

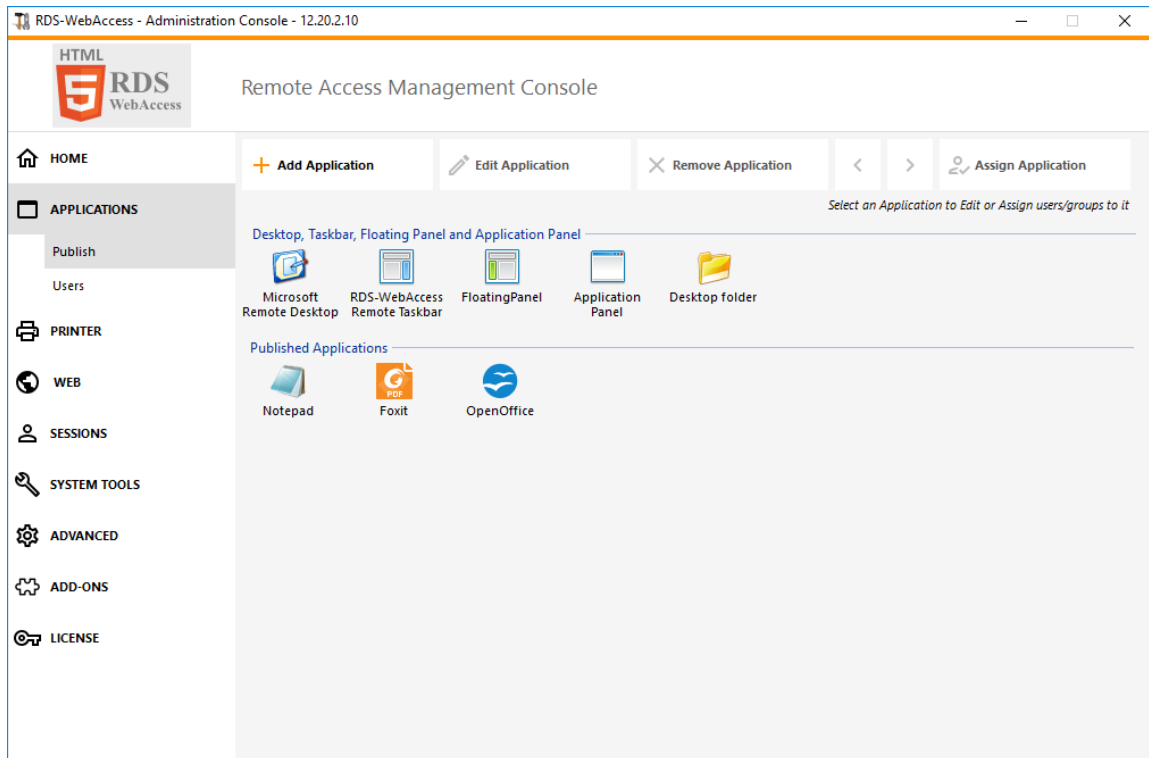
### Benefits for the Administrators:

- Licensing and Version information is **easy to locate**.
- **Core operational status can be seen assessed quickly** thanks to the red/green indicators on the main administration console page.

# The Applications Tab

## Key Improvements:

- Default Applications and Published Applications are visible at a glance with large icons
- Easy and Quick access to the main settings:
  - Add, Edit or Remove Applications.
  - Assign Applications to Users/Groups.



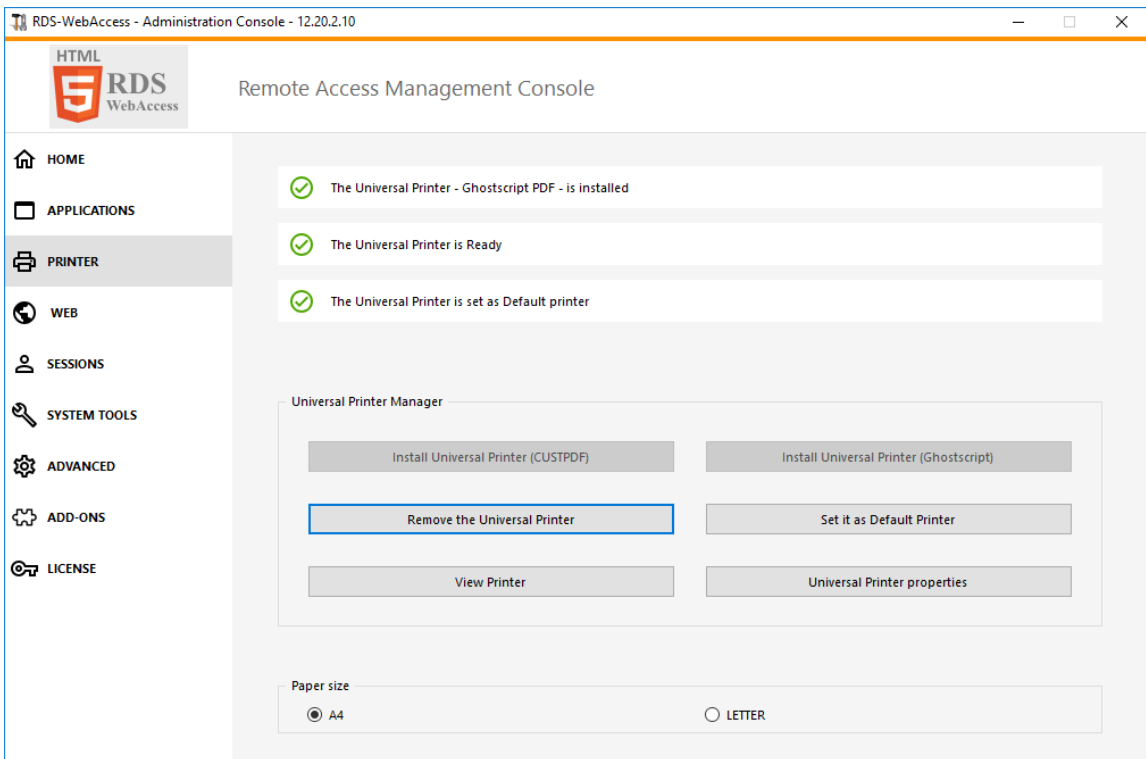
## Benefits for the Administrators:

- Get a **clear view** of what apps are already published, **in just one click**.
- Easier users' assignment and **overall network management**.

# The Printer Tab

## Key Improvements:

- The RDS-WebAccess Universal printer now has its own management tab. Previously found as a sub-menu in the 'Server' tab, all of the Universal printer's functions are now located in one easy to manage console.
- The Printer status is immediately visible with a color code (green=ok / red = issue)



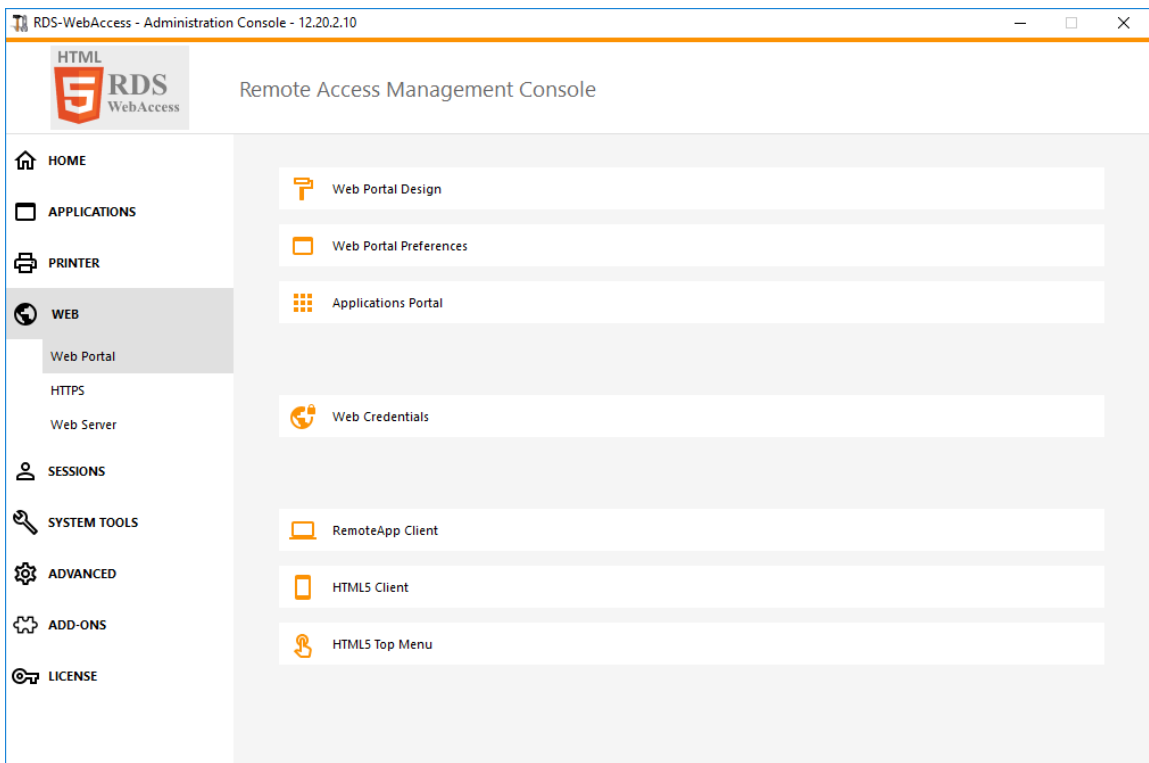
## Benefits for the Administrators:

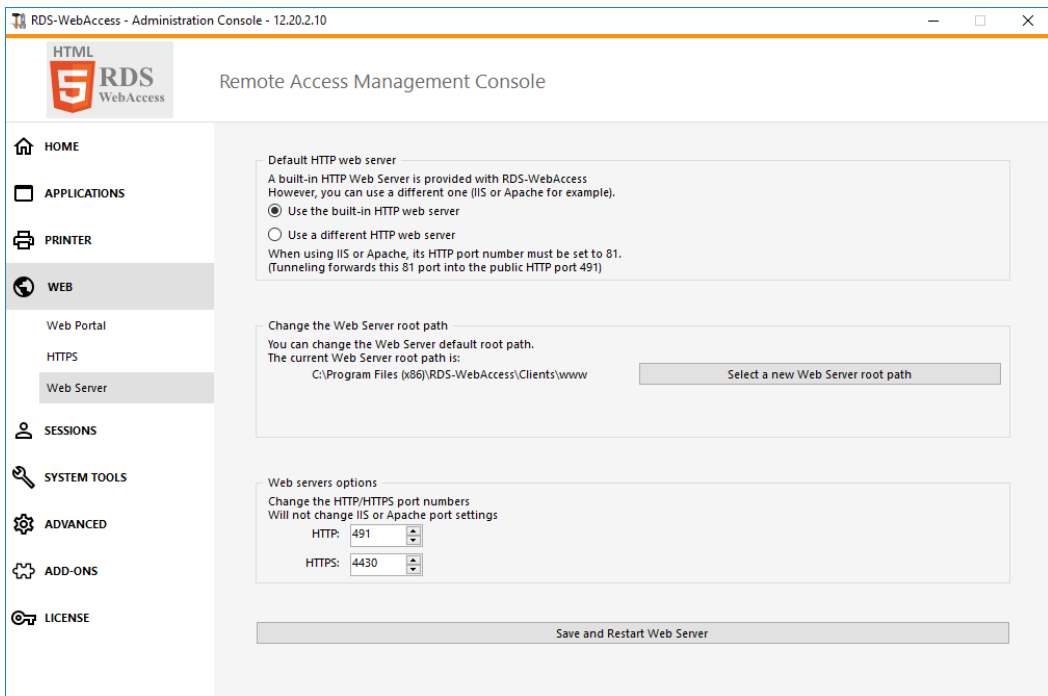
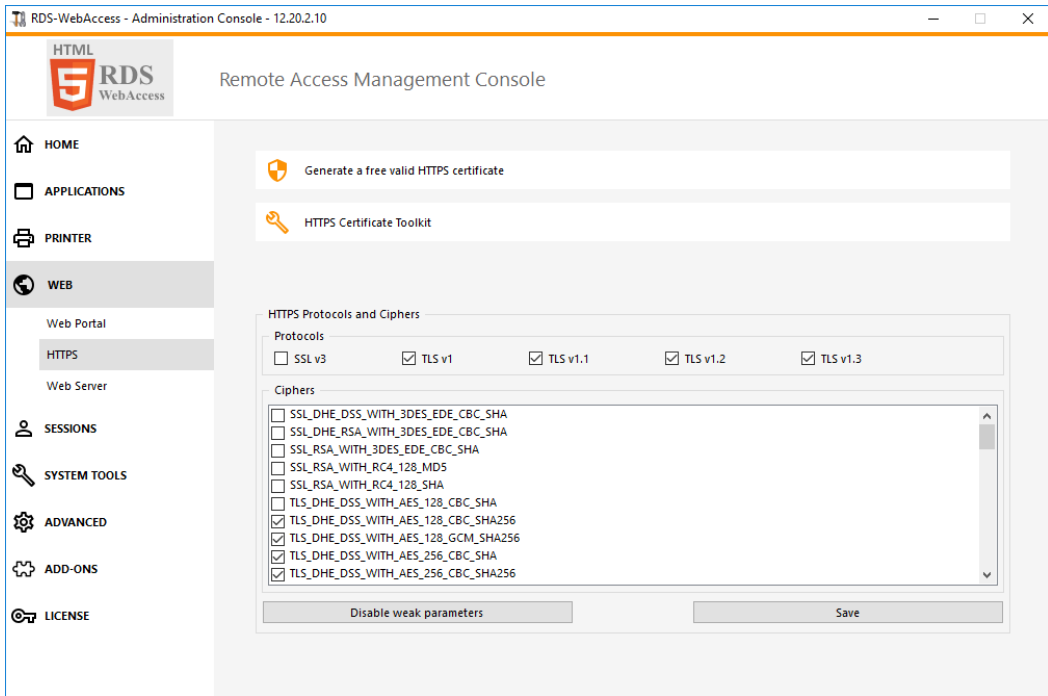
- **Quick and easy access** to Universal Printer management tools and settings.
- The feature is **much more visible**: with its own tab, located in second position on the list.

# The Web Tab

## Key Improvements:

- Settings for the Web server have been split into three categories:
  - Web Portal: Manage settings for customization, security and remote app.
  - HTTPS: With tools for importing a CA issued SSL, or generating your own.
  - Web server: options for changing the server's path and ports.
- Settings are displayed by operational priority. Mandatory settings first, followed by optional settings.





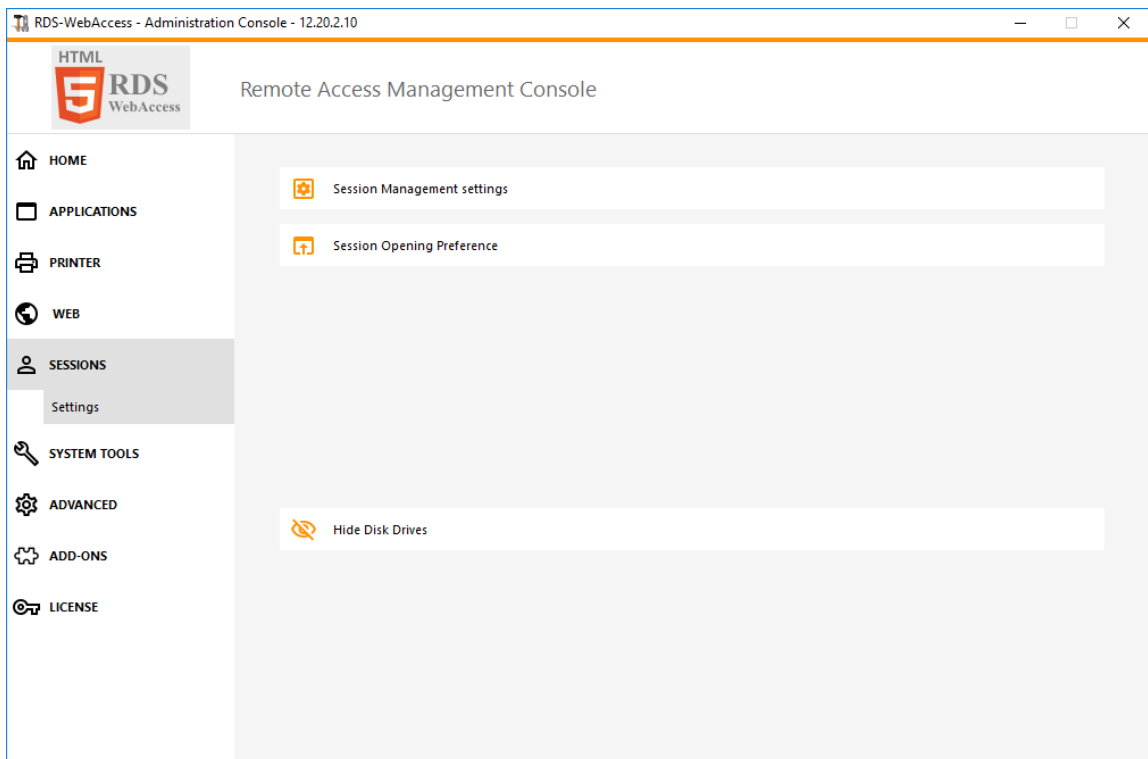
### Benefits for the Administrators:

- More logical menu hierarchy, with **improved configuration descriptions** will encourage administrators to properly complete mission critical configurations before moving on to optional setups..

## The Sessions Tab

### Key Improvements:

- All settings for user management under one top-level menu. Previously a sub-menu of the 'Server' Tab, which has since been removed.
- Manage user sessions and environment.

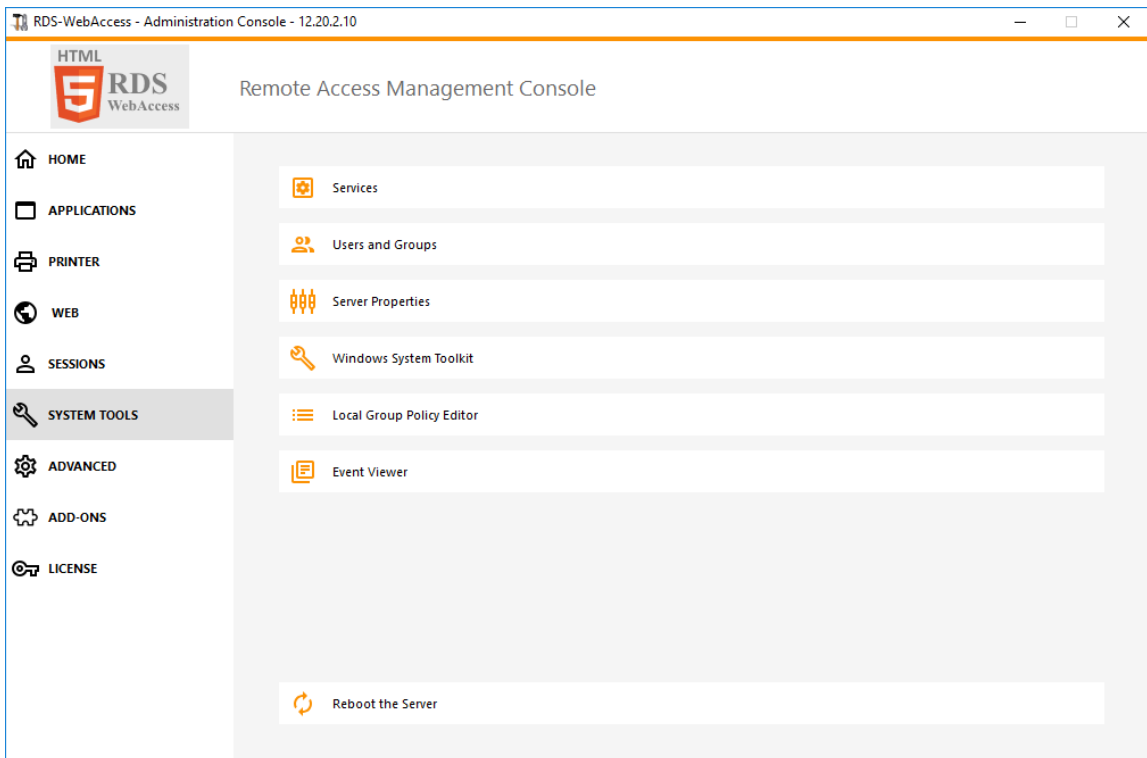




## The System Tools Tab

### Key Improvements:

- This new tab creates a top level location for all basic system administration tools, previously appearing by default under the 'Server' tab.
- Settings are splitted in seven categories:
  - Running services
  - Users and Groups list
  - Windows server parameters
  - Windows system tools
  - GPO Editor
  - Event Viewer
  - Reboot the server



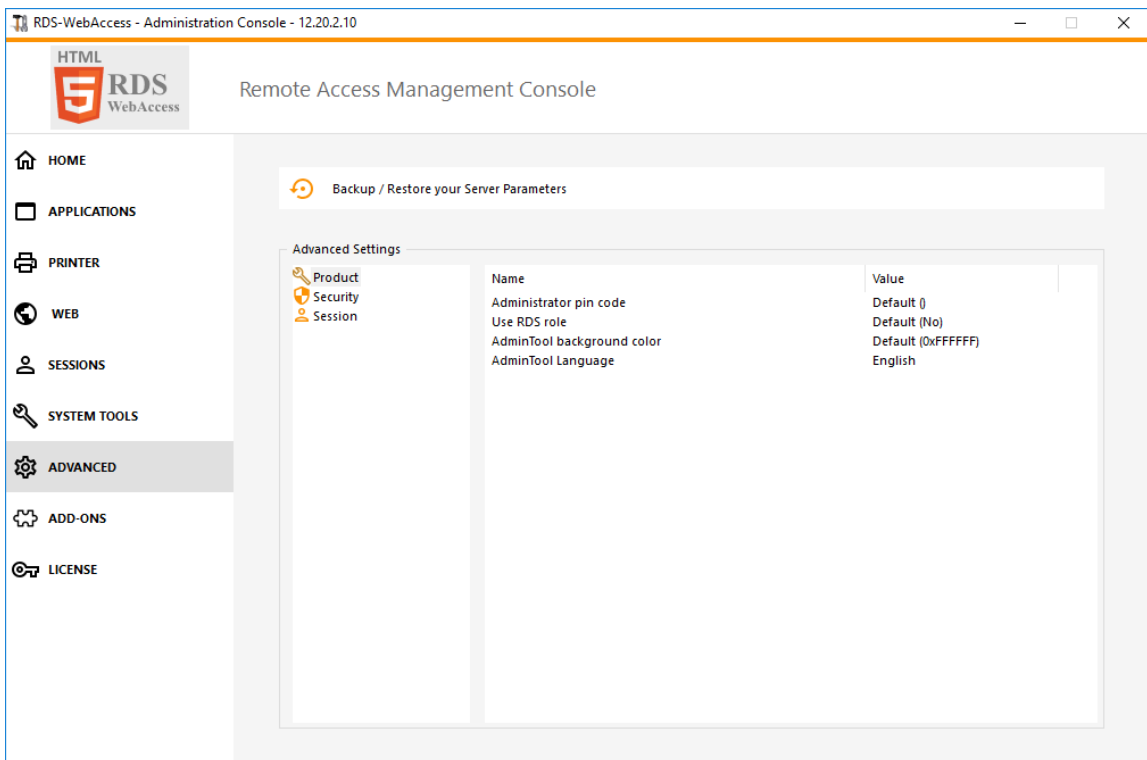
### Benefits for the Administrators:

- Easy access to all Windows system parameters.

# The Advanced Tab

## Key Improvements:

- This new tab has been created for experienced IT Administrators who wish to add specific parameters and values directly into RDS-WebAccess program code.
- Organized by categories: Product - Security - Session



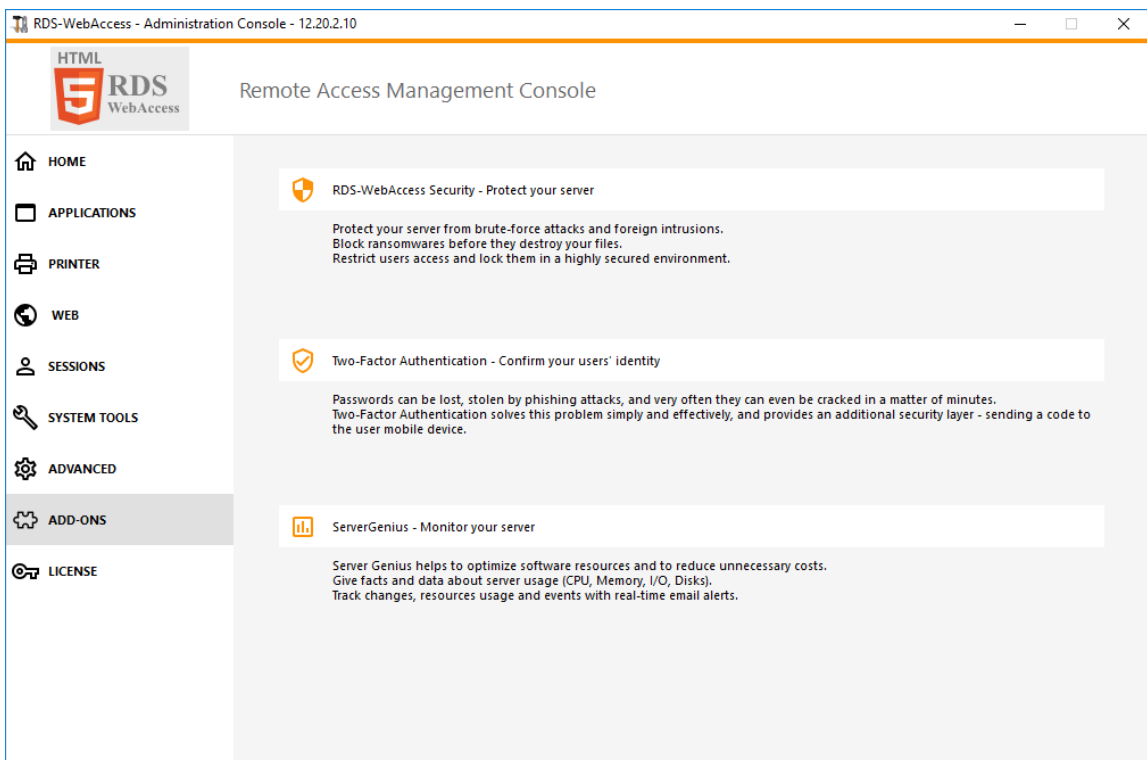
## Benefits for the Administrators:

- Easy access to all **special** system parameters.

## The Add-ons Tab

### Key Improvements:

- The Add-Ons tab offers additional tools to download and try right away
- On this tab you will find RDS-WebAccess Security (Ultimate version), Server Genius and the new 2FA (Two Factor Authentication) security option



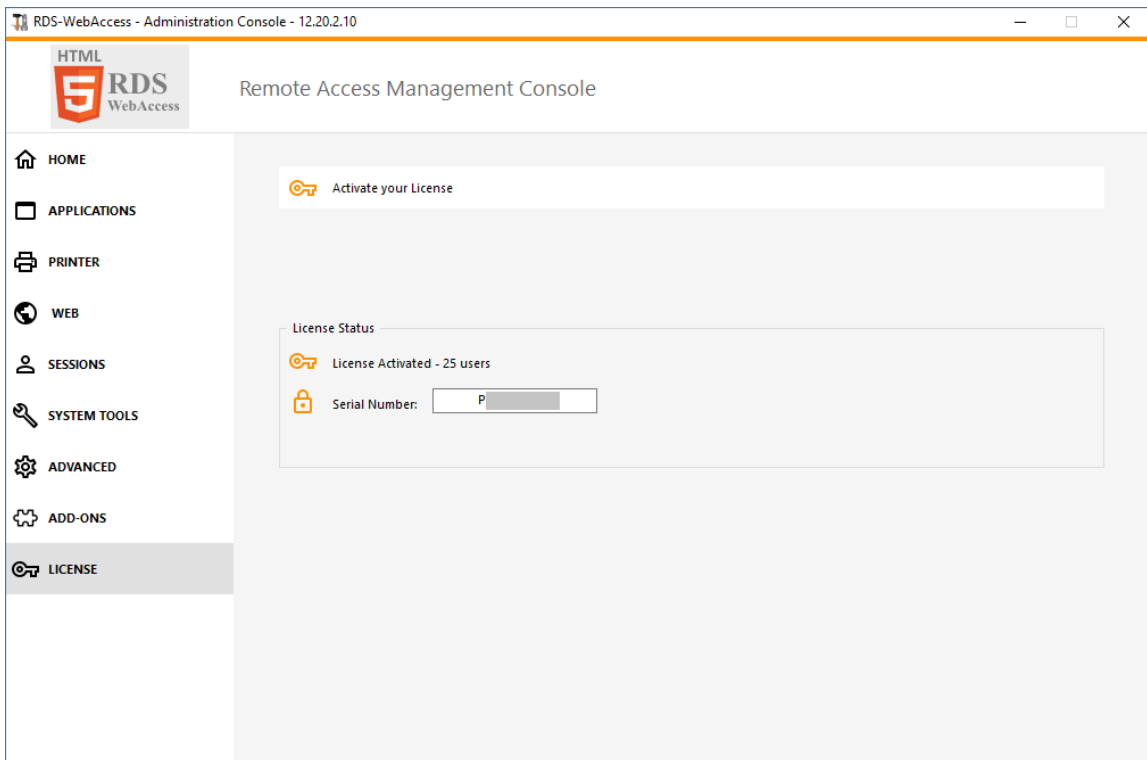
### Benefits for the Administrators:

- Improved visibility of the add-ons and possibility to quickly test them.
- For more information, check:
  - [RDS-Knight Datasheet](#) and [Documentation](#) ;
  - [2FA Datasheet](#) and [Documentation](#) ;
  - [Server Genius Datasheet](#) and [Documentation](#).

## The License Tab

### Key Improvements:

- Everything about licensing from the Activation Key to License Upgrade Options.
- Indication of the Update and Support expiration date
- Listing of the Edition(s) activated



### Benefits for the Administrators:

- **Improved visibility of RDS-WebAccess Edition information**, along with a clear path to easy upgrades.