



RDS-WebAccess

Connect to your server from any device, anywhere

With the emergence of DSL, cable, and fiber optic Internet communications, anyone can publish Windows applications and web-enable them to share legacy resources across their internal LAN or throughout the world via the web. Furthermore, with the powerful rise of BYOD and remote working, it becomes mandatory to access your Remote Desktop from any device (Laptop, Chromebook, IPAD, Macbook, Surface...) whenever you want.

Take advantage of RDS-WebAccess features and secure, anywhere, any device connectivity and access-management solutions.

Just install **RDS-WebAccess** on your RDS/TSE servers, and you will immediately web-enable your Remote Desktop. There's nothing to install on the user side: All you need is an HTML5 compatible web browser. Local and remote users running UNIX, Linux, Mac OS X, Windows and any mobile device will simply connect using the Web Portal on any web browser. The application then appears on your device just as if it were running locally. And thanks to **RDS-Web Access** high-performance client, you benefit from a fast and efficient access.

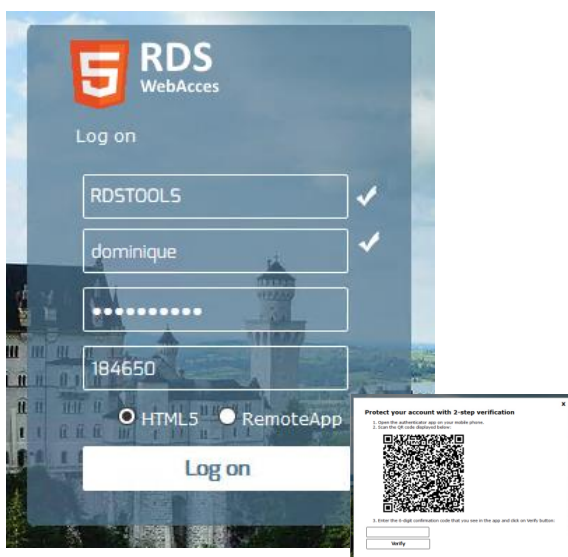
Fully secured and customizable Web Portal

The Web Access Portal provides a **secure, managed and accelerated access** from local and any remote servers location, to text or graphics-rich Windows applications and to Windows desktops.

Access it **securely**, thanks to SSL encryptions. Add an extra layer of security with the **Two Factor Authentication option**. Users will always need two pieces of information to be able to connect:

- Their credentials (Logon/Password).
- A secure code generated by an Authentication App on his mobile device.

Use **any device** such as your Chromebook, Android tablet, iPad, iPhone or smartphone to connect to your PC or your remote computers **from anywhere** and you will have access to all programs, documents, files, applications and network resources as if you were in front of the host PC. You can easily **customize it** with different themes, various background images, your own images or logos...



Connect in HTML5 or RemoteApp via the 2FA secured Web Portal



Fully integrates itself with existing platforms and infrastructure



The Easy-to-use AdminTool and Remote Session

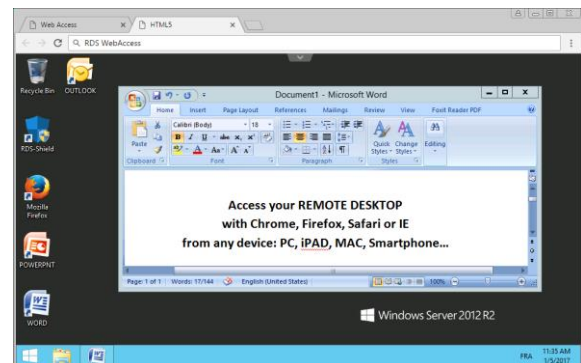
RDS-WebAccess is a **clientless remote desktop solution**. We call it *clientless* because no plugin or client software are required.

With **RDS-WebAccess**, you will leverage the advanced features of HTML5 to quickly and easily turn any HTML5-compatible browser or device into an enhanced RDP Client.

Instantly connect to Windows desktops and applications, from iPad, iPhone, Android devices, computers running Windows, Mac OS X, Linux, Chrome OS, and even from locked-down work stations – without installing Flash, Java or any other software on the end-user device. That means zero client maintenance!

Maintains 100% of applications features, functions & branding

RDS-WebAccess allows you to access your PC or your RDS/TSE server to open your Desktop from anywhere in the world, using the device of your preference. Users will have a full Remote Desktop Experience by listening to the sound that plays on the remote machine in real-time, exchanging files between the remote machine and the portable device and even printing from the remote host to the local device.



Pre-requisites

System environment

- Windows XP to Windows 10
- Windows 2003 to 2019
- 4 GB RAM / 200 MB system disk space
- TCP/IP connectivity
- RDS/Terminal Services Licensing roles

Client

- XP, W7, W8, W10
- Laptop, PCs or notebooks
- Thin-client devices
- Mac OS X
- Mobile/tablet/Smartphone devices

Try it now! **RDS-WebAccess** is the most cost-effective and easy-to-use solution to remotely connect to your server from any device.

[Download a 15-days free trial](#)